

### Features

- Input voltage: 220–240 V AC, 50/60 Hz
- Input voltage range: 198–264 V AC
- Electrical protection class 1
- IP: 65
- IK: 11+ / 80 joules
- Incandescent wire test 850 °C / 30 s
- Rated ambient operating temperature: 25 °C
- Operating temperature range : -20 °C ... +35 °C
- VK45 surface mounted, VK46 ceiling mounted, VK46 flush mounted
- CRI: 80
- SDCM (Standard Deviation Colour Matching): 3
- Photobiological hazard: RG0
- Energy class C light source
- Lumen maintenance: L80B10 / over 72,000 hours
- Lumen maintenance: L90B50 / 52,000 hours
- Number of detector switching cycles: 1,000,000 at maximum load.
- Repairable luminaire. Spare parts available on demand
- 5-year guarantee, details of conditions available on [securlite.com](http://securlite.com)

### Applications

- Technical luminaire in EZ steel version for indoor or outdoor environment
- Stainless version: 316L brushed stainless for severe corrosive environments (seaside), indoor and outdoor
- Stainless version: 314L painted stainless for indoor or outdoor environment
- Installation positions: refer to installation instructions

### Materials

- Base: 1 mm thick zinc-plated steel, frame 2 mm thick ZP steel
- Stainless version: 316L brushed stainless body and frame
- Stainless version: 304L painted stainless body and frame
- Diffuser: opal polycarbonate
- RoHS: the products contain no prohibited substances as defined in the European Directive 2011/65/UE and amendments

### Colours / Finish

- Standard colour: graphite grey RAL7016, abrasion-resistant polyester paint finish, withstands polluting chemical elements
- 316L brushed stainless
- 304L painted stainless: graphite grey RAL7016, abrasion-resistant polyester paint finish, withstands polluting chemical elements

*Technical and dimensional data are given for information only and may be modified at any time without notice. Please enquire before ordering.*

05/01/2024

## Wiring

- Supply terminal block: automatic, dual-entry, for 3 × 1.5 mm<sup>2</sup> conductors
- 2 side cable entries for M20 cable gland (not supplied)

## Fixings

- Diffuser: retained by M5 stainless 2-point tamper-proof screws with sealing washers

## Facilities available

- Flat Duroflam® diffuser: add the suffix **9413** to the product code – example: 64xxxxxx **9413**
- Anti-graffiti protection: add the suffix **9601** to the product code – example: 64xxxxxx **9601**
- Stainless crosspoint screws (VK54): add the suffix **9702** to the product code – example: 64xxxxxx **9702**

## Tools

(to be ordered separately)

- M5 bit for 2-point tamper-proof screws – code: **98000003**
- M5 bit-holder screwdriver – code: **98000 0005**

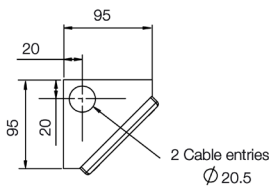
## Approvals

Certificates available:

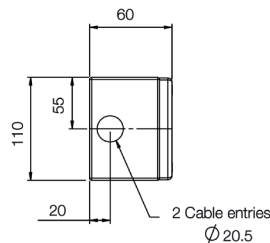
- CE certificate (as per EN60598-1 / 2-1 / 2-2)
- Incandescent Wire Test certificate (depending on product)

## Dimensions

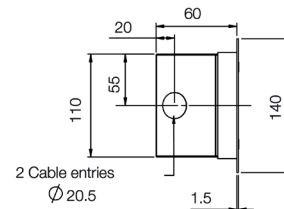
TITAN COMPACT Angle



TITAN COMPACT Wall mounted

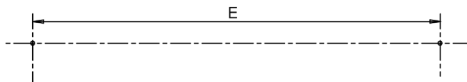


TITAN COMPACT E  
(Recessed version)

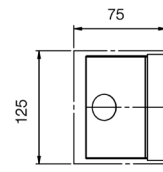


Fixing (E) for wall mounting and recessed version :

- 260 mm (for version 1 module LLC)
- 440 mm (for version 2 modules LLC)
- 600 mm (for version 3 modules LLC)
- 700 mm (for version 4 modules LLC)



Recess dimensions (TITAN COMPACT E - Recessed version):



LENGTH:

- 390 mm (for version 1 module LLC)
- 675 mm (for version 2 modules LLC)
- 960 mm (for version 3 modules LLC)
- 1245 mm (for version 4 modules LLC)

Fixing (E) for angle version :

- 120 mm (for version 1 module LLC)
- 220 mm (for version 2 modules LLC)
- 350 mm (for version 3 modules LLC)
- 350 mm (for version 4 modules LLC)



Technical and dimensional data are given for information only and may be modified at any time without notice. Please enquire before ordering.

05/01/2024

## Technical data and order codes

TITAN COMPACT (surface mounted)						
Designation	CCT (K)	Power (W)	Luminaire light output (lm)	Luminaire efficacy (lm)	Frame length (mm)	Code EZ steel
1 x 1300lm	3000K	11	750	68	375	64011300
1 x 1300lm	4000K	11	800	73	375	64011400
2 x 1300lm	3000K	21	1750	83	660	64021300
2 x 1300lm	4000K	21	1800	86	660	64021400
3 x 1300lm	3000K	31	2650	85	945	64031300
3 x 1300lm	4000K	31	2750	89	945	64031400
4 x 1300lm	3000K	43	3500	81	1230	64041300
4 x 1300lm	4000K	43	3650	85	1230	64041400

TITAN COMPACT ANGLE						
Designation	CCT (K)	Power (W)	Luminaire light output (lm)	Luminaire efficacy (lm)	Frame length (mm)	Code EZ steel
1 x 1300lm	3000K	11	750	68	375	64111300
1 x 1300lm	4000K	11	800	73	375	64111400
2 x 1300lm	3000K	21	1750	83	660	64121300
2 x 1300lm	4000K	21	1800	86	660	64121400
3 x 1300lm	3000K	31	2650	85	945	64131300
3 x 1300lm	4000K	31	2750	89	945	64131400
4 x 1300lm	3000K	43	3500	81	1230	64141300
4 x 1300lm	4000K	43	3650	85	1230	64141400

TITAN COMPACT E stainless steel								
Designation	CCT (K)	Power (W)	Luminaire light output (lm)	Luminaire efficacy (lm)	Aperture Length (mm)	Frame length (mm)	Code 316L	Code 304L
1 x 1300lm	3000K	11	750	68	390	405	64218300	64251300
1 x 1300lm	4000K	11	800	73	390	405	64218400	64251400
2 x 1300lm	3000K	21	1750	83	675	690	64228300	64261300
2 x 1300lm	4000K	21	1800	86	675	690	64228400	64261400
3 x 1300lm	3000K	31	2650	85	960	975	64238300	64271300
3 x 1300lm	4000K	31	2750	89	960	975	64238400	64271400
4 x 1300lm	3000K	43	3500	81	1245	1260	64248300	64281300
4 x 1300lm	4000K	43	3650	85	1245	1260	64248400	64281400

Operating instruction : [www.securlite.com](http://www.securlite.com) (NOT0715)

Technical and dimensional data are given for information only and may be modified at any time without notice. Please enquire before ordering.

05/01/2024