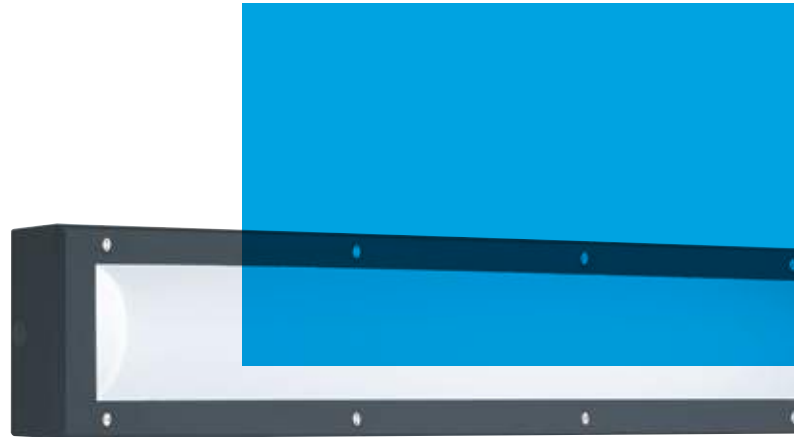


TITAN



BVCert. 6037554



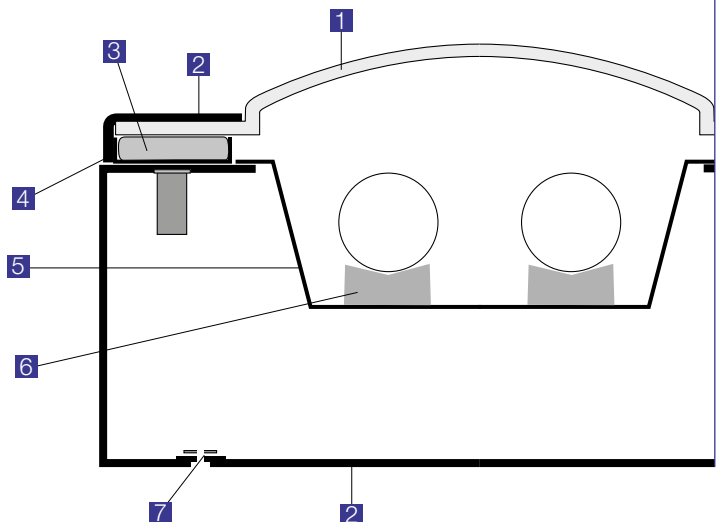
A range of elegant technical luminaires designed to withstand extreme vandalism in public spaces.

More light, less maintenance: the Titan is the long-life lighting solution that project owners and users of public spaces alike will find re-assuring!

↘ **Longer life**
With LEDs and professional power supplies designed to last 50,000 hours.

↘ **Greater savings**
Thanks to the LED fittings and lighting management systems: detection, dimming, etc.

- 1 Braced polycarbonate diffuser
- 2 Steel frame and base treated against corrosion, 2 mm thick
- 3 Seal compression chamber
- 4 Lip to prevent forced entry
- 5 Sliding, plug-in reflector gear tray
- 6 Anti-vibration pads
- 7 Supplied c/w sealing washers



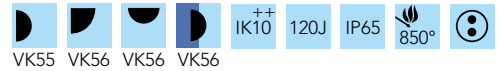
TITAN



A comprehensive range
of steel luminaires designed for
premises and pedestrian subways
subject to extreme vandalism.



Features:



- Luminaire withstands extreme vandalism
- Wall- (Titan C95) or 45° (Titan A45) or 30° (Titan A30) corner-mounted versions: body and frame in ZP steel
- Flush-mounting version (Titan E): body and frame in painted 304L stainless steel or all-stainless steel in brushed 316L stainless steel. Please enquire.
- CCT 4000 K, CRI min. 80
- Polyester powder-coated finish
- Braced opal polycarbonate diffuser
- Stainless steel vandal-resistant screws
- Wall- and corner-mounting versions supplied c/w nickel-plated brass cable gland
- Flush-mounting version supplied c/w IP66 cable seal

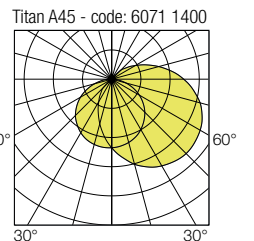
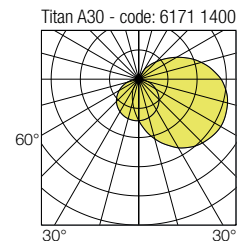
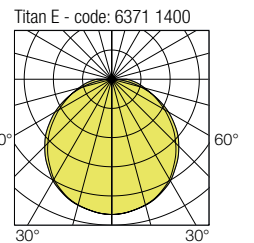
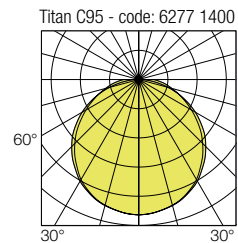
■ RAL7016

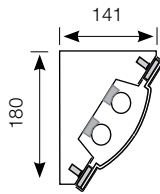
Options available on request:

- 3000 K LEDs
- Colour white: RAL9003
- Quick connect version
- Version with emergency pack
- Standby LED
- Class 2
- Trunking (cover panel for linking between luminaires)

🔧 Vandal-resistant tool (bit) to be ordered separately
code: 9800 0004

📱 Radio remote control to be ordered separately
code: 9800 0010





TITAN A30 LED

i direct 617

220-240 V AC / 50/60 Hz   RoHS

Length (mm)	Power (W)	Luminaire light output (lm)	Luminaire efficacy (lm/W)	Code
720	12	1050	88	6170 14..
	17	1850	109	6172 14..
	21	2010	96	6171 14..
	43	4080	95	6173 14..
1330	17	1820	107	6174 14..
	41	4250	104	6176 14..
	43	4030	94	6175 14..
	70	6930	99	6177 14..

Lifetime: L90B50 / 50,000 h

Fluorescent version: contact us

Coding:

replace the two dashes (--) by the corresponding figures: e.g. **6171 14..**

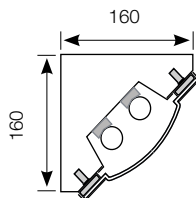
- 00** no detection
- 21** DALI dimmable + switch dimming + standby warning
- 12** with Pro detection
- 14** with Pro detection + extinction warning
- 15** with Pro detection + standby warning
- 16** with Pro detection + radio-control
- 04** slave version + extinction warning
- 05** slave version + standby warning

Additional options for Titan A30

Coding:

add the corresponding suffix to the product code: e.g. **6171 1400 - - - -**

- 9101** through wiring
- 9413** flat Duroflam® diffuser
- 9415** flat opal PC diffuser
- 9601** anti-graffiti protection
- 9702** stainless steel crosspoint screws (VK54)



TITAN A45 LED

i direct 607

220-240 V AC / 50/60 Hz   RoHS

Length (mm)	Power (W)	Luminaire light output (lm)	Luminaire efficacy (lm/W)	Code
720	12	1050	88	6070 14..
	17	1850	109	6072 14..
	21	2010	96	6071 14..
	43	4080	95	6073 14..
1330	17	1820	107	6074 14..
	41	4250	104	6076 14..
	43	4030	94	6075 14..
	70	6930	99	6077 14..

Lifetime: L90B50 / 50,000 h
Fluorescent version: contact us

Coding:

replace the two dashes (--) by the corresponding figures: e.g. **6071 14..**

- 00** no detection
- 21** DALI dimmable + switch dimming + standby warning
- 12** with Pro detection
- 14** with Pro detection + extinction warning
- 15** with Pro detection + standby warning
- 16** with Pro detection + radio-control
- 04** slave version + extinction warning
- 05** slave version + standby warning

Additional options for Titan A45

Coding:

add the corresponding suffix to the product code: e.g. **6071 1400 ----**

- 9101** through wiring
- 9413** flat Duroflam® diffuser
- 9415** flat opal PC diffuser
- 9601** anti-graffiti protection
- 9702** stainless steel crosspoint screws (VK54)