

CAPTAIN

Stylish and connected



BVCert. 6037554



CAPTAIN is a new luminaire, born out of an eco-design policy, that offers innovative functions for lighting in hallways and circulation areas. Its elegant design and environmental characteristics make it more than a traditional bulkhead fitting – your perfect partner for managing your lighting installations in an efficient, environmentally-friendly way.

Manufactured from recycled and recyclable plastics and factory-repairable, the Captain luminaire is reusable in an overall maintenance circuit and forms part of a circular economy policy aimed at extending useful life. It is fitted with a high-performance, repairable LED system, with up to 2750 lm output and very low consumption of 130 lm/W, for an L80B10 life-expectancy of 72,000 hr.



THE CONNECTED ERA'S FIRST LED LUMINAIRE FOR COMMUNAL AREAS



And because everyone is concerned for the environment, its lighting module can be dismantled and repaired, without needing to replace the luminaire as a whole. This extends its useful life and allows technical evolution.



Its LED module, its detector, and its communication system are designed, developed, and manufactured in France and carry the *Origine France Garantie* label – the only quality mark that truly guarantees local manufacturing and that our suppliers and subcontractors too are in France.

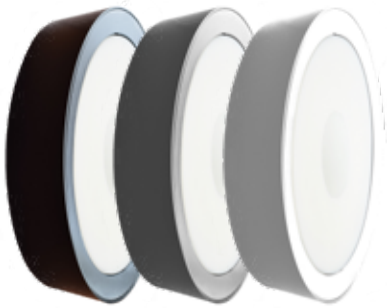


Its base in recycled polycarbonate is in line with our circular economy policy. Its reinforced construction, impact resistant to IK10 and its invisible secure closure make this a very durable luminaire.






Design by PM Design.





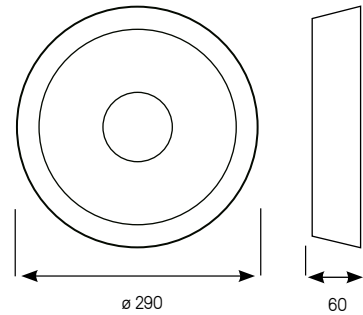
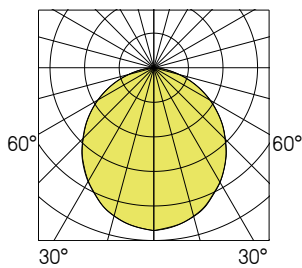
FEATURES:

- Low-consumption architectural luminaire
- Mount, base, bezel made from recycled polycarbonate
- High-performance polycarbonate diffuser
- Captive, non-visible stainless steel vandal-resistant fixings
- Standby consumption: Captain consumes less than 0.5 W in standby
- Lumen maintenance: L80B10 / over 72,000 hours
- RAL 9003 
- RAL 7035 
- RAL 9005 

OPTIONS AVAILABLE ON REQUEST:

- LED 3000 K
- Stainless steel crosspoint screws

Captain - code : 1912 0457



CAPTAIN version on / off

220-240 V AC / 50 / 60 Hz



direct 190

Designation	Power (W)	Luminaire light output (lm) 4000 K	Luminaire efficacy (lm / W)	White RAL 9003	Grey RAL 7035*	Black RAL 9005*
Captain 2000	11	1550	141	1901 0400	1901 1400	1901 2400
Captain 2600	15	1950	130	1902 0400	1902 1400	1902 2400
Captain 3600	21	2750	131	1903 0400	1903 1400	1903 2400

Vandal-resistant tool (bit) to be ordered separately
code : 9800 0003

*RAL7035 and RAL9005:

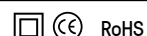
for power, light output, and efficacy information, please refer to data sheet.

Coding colour temperature 3000 K :
replace 4 with 3

example 4000K : 1901 0400
3000K : 1901 0300

CAPTAIN Dali

220-240 V AC / 50 / 60 Hz



direct 190

Designation	Power (W)	Luminaire light output (lm) 4000 K	Luminaire efficacy (lm / W)	White RAL 9003	Grey RAL 7035*	Black RAL 9005*
Captain 2000	12	1550	129	1901 0420	1901 1420	1901 2420
Captain 2600	15	1950	130	1902 0420	1902 1420	1902 2420
Captain 3600	21	2750	131	1903 0420	1903 1420	1903 2420

*RAL7035 and RAL9005:

for power, light output, and efficacy information, please refer to data sheet.

Coding colour temperature 3000 K :
replace 4 with 3

example 4000K : 1901 0400
3000K : 1901 0300

CAPTAIN connected with detection

220-240 V AC / 50 / 60 Hz



direct 190

Designation	Power (W)	Luminaire light output (lm) 4000 K	Luminaire efficacy (lm / W)	White RAL 9003	Grey RAL 7035*	Black RAL 9005*
Captain 2000	12	1550	129	1911 0457	1911 1457	1911 2457
Captain 2600	15	1950	130	1912 0457	1912 1457	1912 2457
Captain 3600	21	2750	131	1913 0457	1913 1457	1913 2457

*RAL7035 and RAL9005:

for power, light output, and efficacy information, please refer to data sheet.

Coding colour temperature 3000 K :
replace 4 with 3

example 4000K : 1911 0400
3000K : 1911 0300

CAPTAIN connected slave

220-240 V AC / 50 / 60 Hz



direct 190

Designation	Power (W)	Luminaire light output (lm) 4000 K	Luminaire efficacy (lm / W)	White RAL 9003	Grey RAL 7035*	Black RAL 9005*
Captain 2000	12	1550	129	1911 0453	1911 1453	1911 2453
Captain 2600	15	1950	130	1912 0453	1912 1453	1912 2453
Captain 3600	21	2750	131	1913 0453	1913 1453	1913 2453

*RAL7035 and RAL9005:

for power, light output, and efficacy information, please refer to data sheet.

Coding colour temperature 3000 K :
replace 4 with 3

example 4000K : 1911 0400
3000K : 1911 0300

Designation	Power (W)	Luminaire light output (lm) 4000 K	Luminaire efficacy (lm / W)	White RAL 9003	Grey RAL 7035*	Black RAL 9005*
Captain 2000	12	1550	129	1911 0455	1911 1455	1911 2455
Captain 2600	15	1950	130	1912 0455	1912 1455	1912 2455
Captain 3600	21	2750	131	1913 0455	1913 1455	1913 2455

*RAL7035 and RAL9005: for power, light output, and efficacy information, please refer to data sheet.

Coding colour temperature 3000 K : replace 4 with 3
 example 4000K : 1911 0400
 3000K : 1911 0300

FEATURES TABLE

Variante	On/Off luminaire	Slave connected luminaire (1)	Connected luminaire with twilight photocell (1)	Connected luminaire with detection (1)	DALI luminaire
On-off	✓	✓	✓	✓	✓
Extinction warning		✓	✓	✓	✓ (2)
Motion detection				✓	
Twilight switching			✓	✓	
DALI					✓ (2)
Switch-Dim		✓	✓	✓	
Daisy-chaining		✓	✓	✓	✓ (2)
Remote-control mode for simple settings via smartphone/tablet applications		✓	✓	✓	

(1) Setting by smartphone via the Lumicare
 (2) Only possible via DALI control



DETAILS





