

# CASEMATE

Universal protection  
for emergency lighting units  
in car-parks and public spaces.



BVCert. 6037554

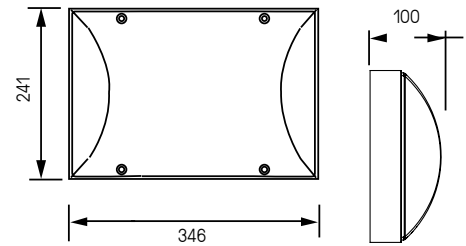




**FEATURES:**


- Universal protection for emergency lighting units
- White lacquered steel structure treated against corrosion
- Extra-thick braced crystal polycarbonate diffuser
- Flexible internal reflector
- Suits dimensions of various self-contained lighting units and luminaires with central light source
- Stainless tamper-resistant screws
- RAL 9003 ○

<b>ABAKX</b>	LDE 400 LDE DBR LDE 10 LDE 50 LDE DUAL
<b>ABB (KAUFEL)</b>	BRIO ECO 3 BRIO + BRIO PRIMO 3 PRIMO +
<b>EATON (LUMS-tainless)</b>	LUM16179 LUM16025
<b>LEGRAND</b>	625 25 / 50 / 60 625 26 / 52 (Casemate 120)
<b>URA</b>	110 000 118 218 V / 219 V 111 013 V 113 218 V 112 013 V
<b>ZEMPER</b>	Toledo Xena flat Venus

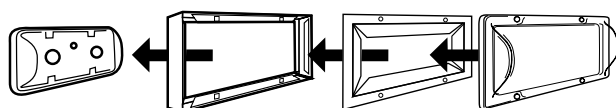


Other models of self-contained and centrally-powered emergency units: please enquire.  
All products and names mentioned are trademarks of their respective owners.

Designation	Code
Casemate	9801 0001
Casemate height 120 mm	9801 0002

 Vandal-resistant tool (bit) to be ordered separately  
code : 9800 0003


LCIE Test Report no. 19017020  
The CASEMATE protector respects the photometric characteristics of the emergency lighting units, in accordance with the requirements of Article 22.16 of the NF EN 60598-2-22 standard from July 1992.



Existing emergency lighting unit on wall

The Casemate's rear opening allows it to be installed directly over the emergency lighting unit without needing to remove it!

Flexible reflector and extra-thick polycarbonate diffuser

 The Casemate protects existing emergency lighting units on the market

 DETAILS



