



## CASEMATE

### Features

- IK: 10+ / 80 joules
- Incandescent wire test 850 °C / 30 s
- VK44 when surface-mounted

### Applications

- Universal protection for emergency lighting units

### Materials

- Rip-out-resistant body in 2 mm thick anticorrosion-treated steel with polyester powder-coated finish
- Diffuser 3 mm transparent polycarbonate

### Coulours / Finish

- Standard colour: white RAL 9003

### Fixings

- Diffuser: closure using vandal-resistant 2-hole stainless M5 screws

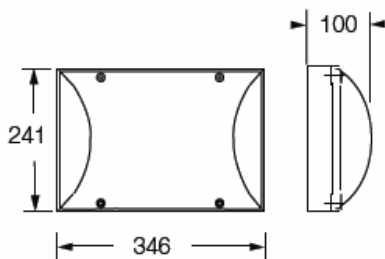
### Accessoires *(to be ordered separately)*

- M5 bit for tamper-resistant 2-hole screws – code: **98000003**
- M5 bit-holder screwdriver – code: **98000005**

### Dimensions

98010001 / Length: 346 mm, width: 241 mm, height: 100 mm

98010002 / Length: 346 mm, width: 241 mm, height: 120 mm



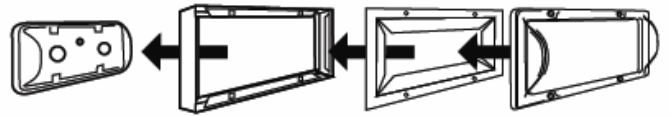
Technical and dimensional data are given for information only and may be modified at any time without notice. Please enquire before ordering.

1

31/03/2022

ABAKX	LDE 400, LDE 45, LDE DBR, LDE 10, LDE50, DUAL, LSC 45, LSC 500
KAUFEL	BRIO ECO 3, BRIO +, BRIO PRIMO 3, PRIMO +
LEGRAND	625 25/50/60, 625 26/52 (Casemate 120)
LUMINOX	LUM16179, LUM16025
URA	110 000, 111 000/001, 112 000/001, 113 000/010, 121 003/420/430, 123 450, 956 318/930
ZEMPER	FVS 1602 T, LDM 3101 XP, LDM 2082 T, LDM 3017 T

Casemate	9801 0001
Casemate height: 120 mm	9801 0002



Existing wall-mounted emergency lighting units.

The aperture in the base of the Casemate allow it to be installed directly over the emergency lighting unit without having to remove it.

Flexible reflector and extra-thick polycarbonate diffuser.